

Ball & Socket Joints

Shoulder

Hip

Incudostapedial

Talonavicular



“SHIT”

©-NAB

©-NAB



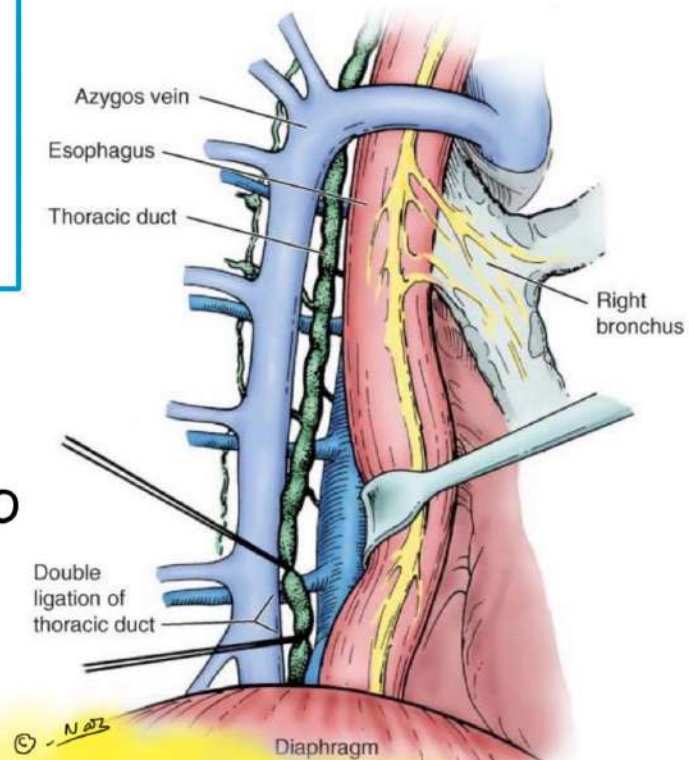
Relationship of Thoracic Duct

www.medinaz.com

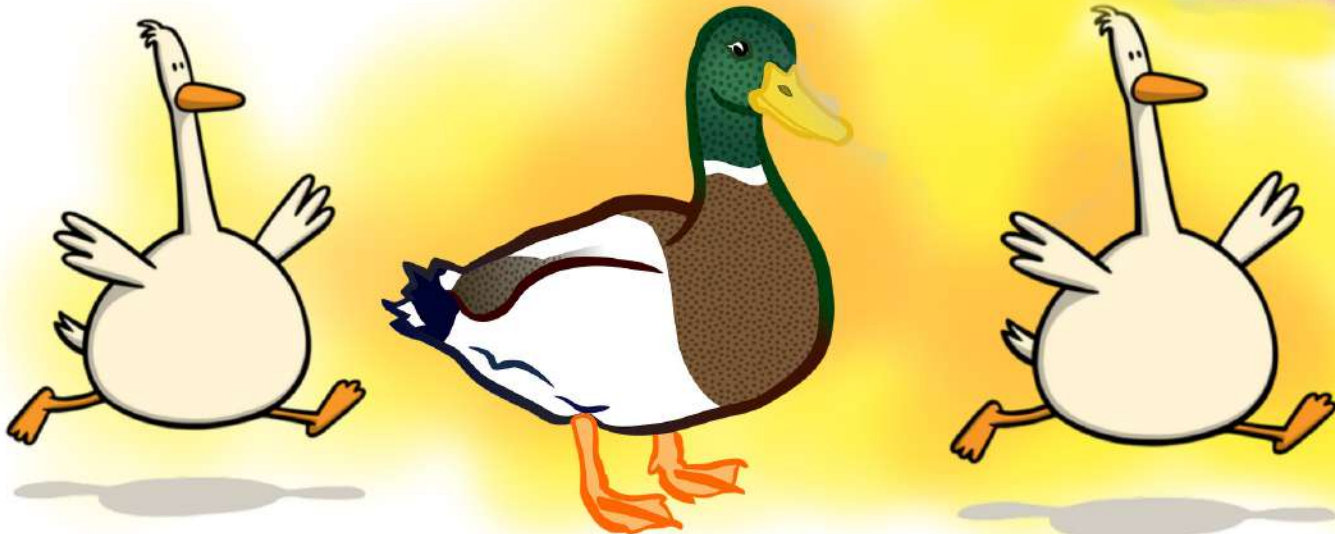
Duck = Thoracic Duct

2 **Gooses** = esopha**Gus** & azy**Gos** vein

© - Naz



“The **Duck** is between two **Gooses**”



Vertebral Level Openings

www.medinaz.com

Venacava

8 letters = T8

© - NMS

Oesophagus

10 letters = T10

© - NMS

Aortic Hiatus

12 letters = T12

© - NMS



Extracellular Matrix Components

www.medinaz.com

Hyaluronic acid

Elastin

Laminin

Proteoglycan

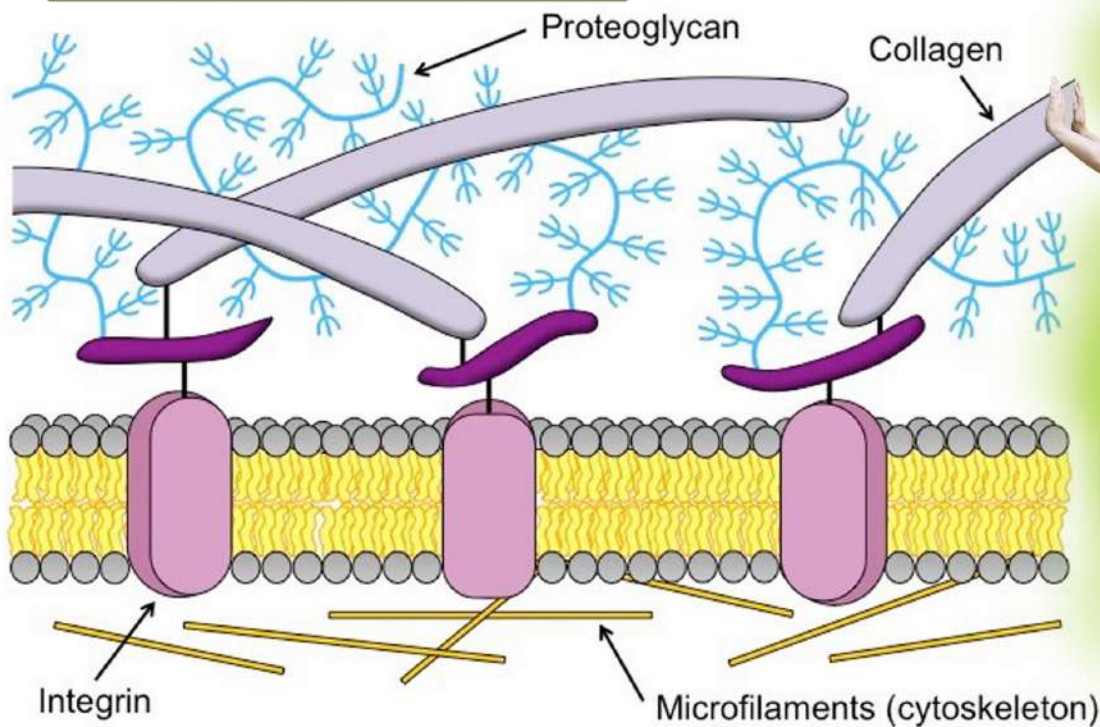
Collagen

Fibronectin

© - N073

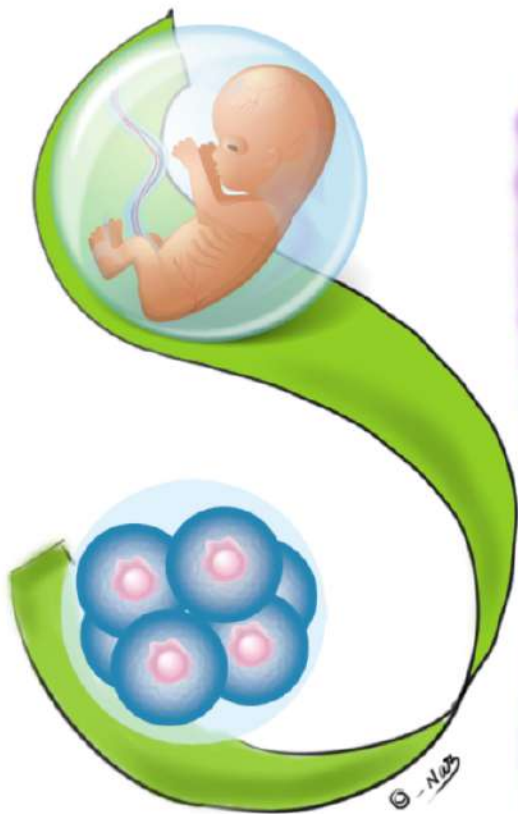
“HELP Collagen Fibres”

© - N073



Cartilage Derivatives of 2nd Branchial Arch

5 “**S**”



Steps

Styloid process

Stylohyoid ligament

**Smaller(lesser) cornu of
hyoid**

**Superior part of body
of hyoid**

© - Nitz